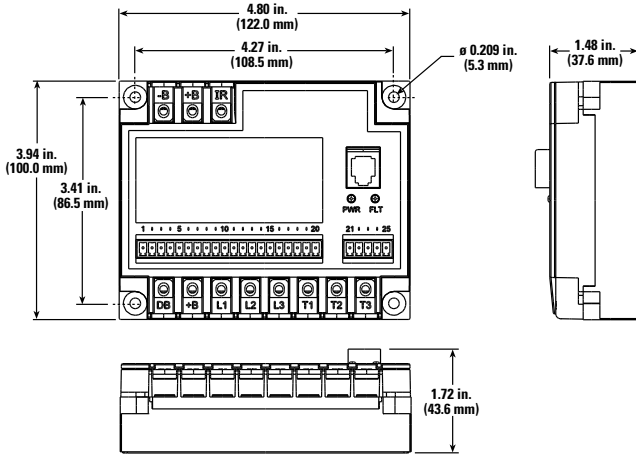
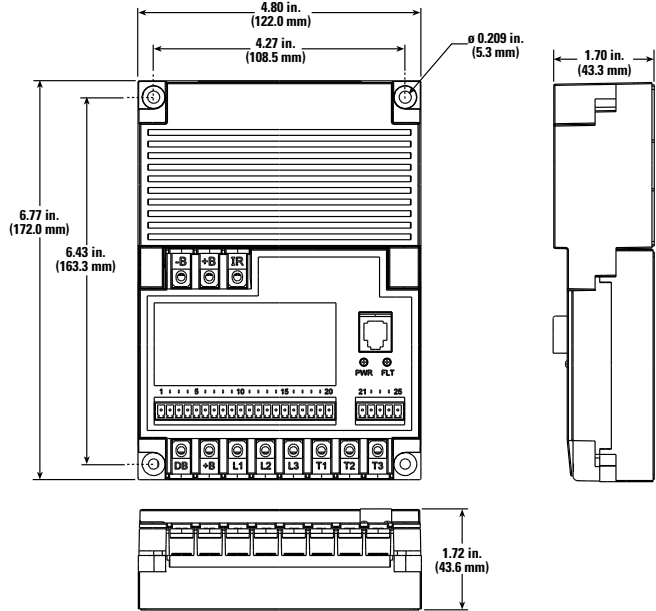




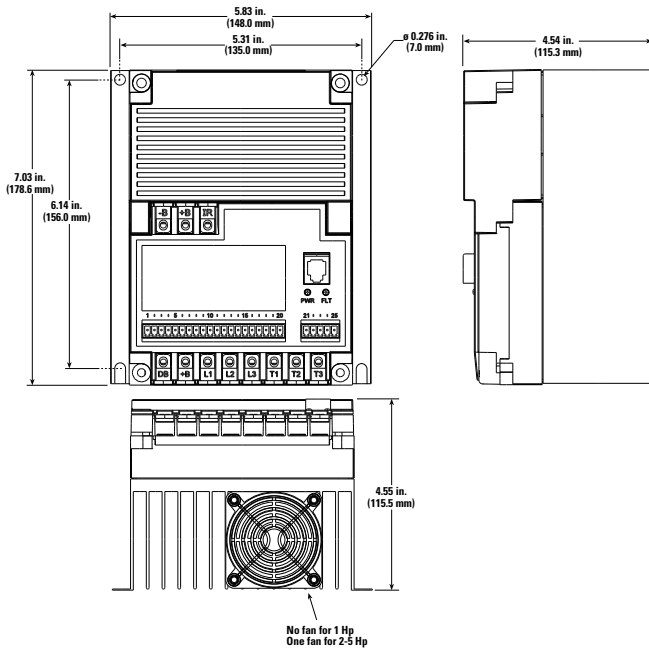
Module Dimensions



Module with CapBlok Dimensions

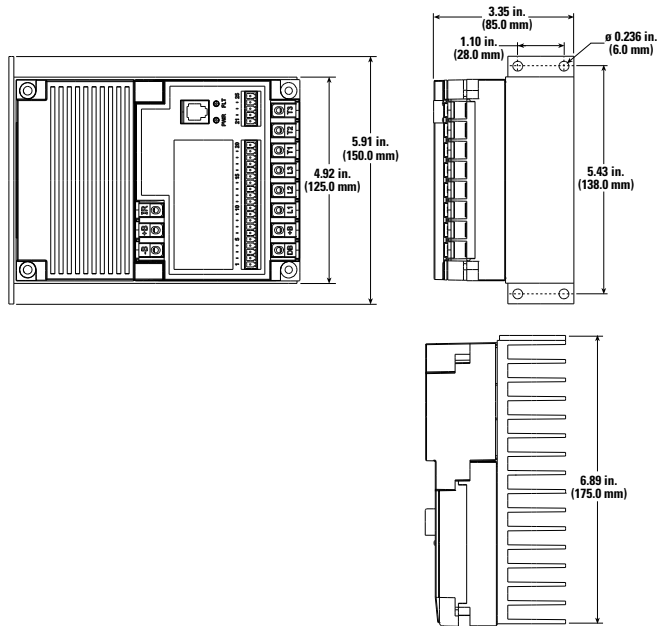


Wall Mount Dimensions

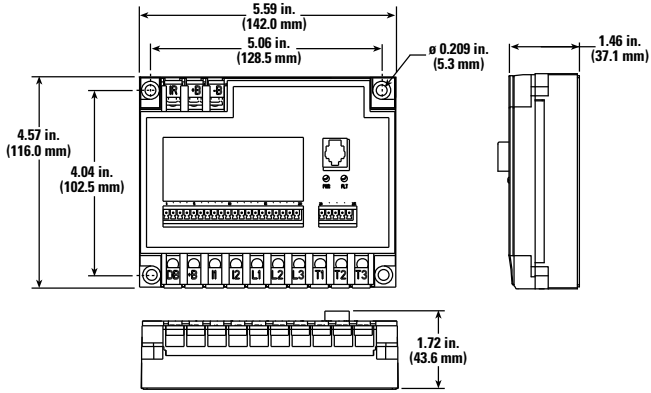


Bookend Dimensions

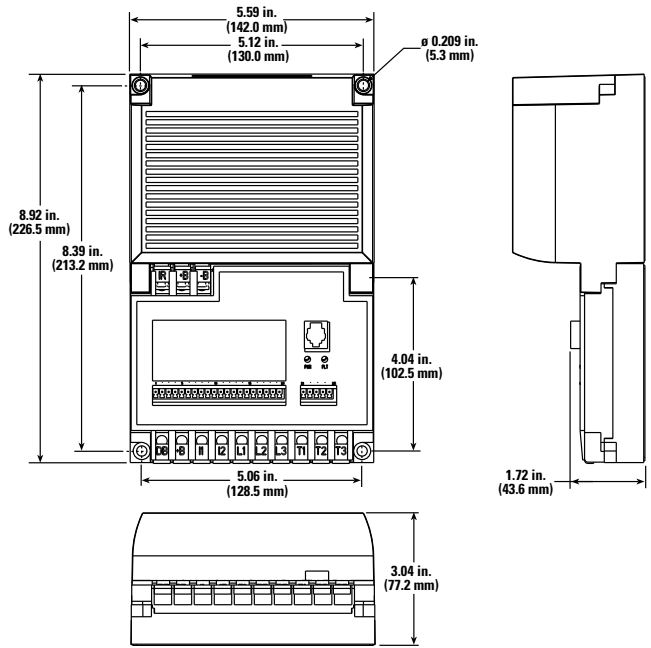
* Available upon request



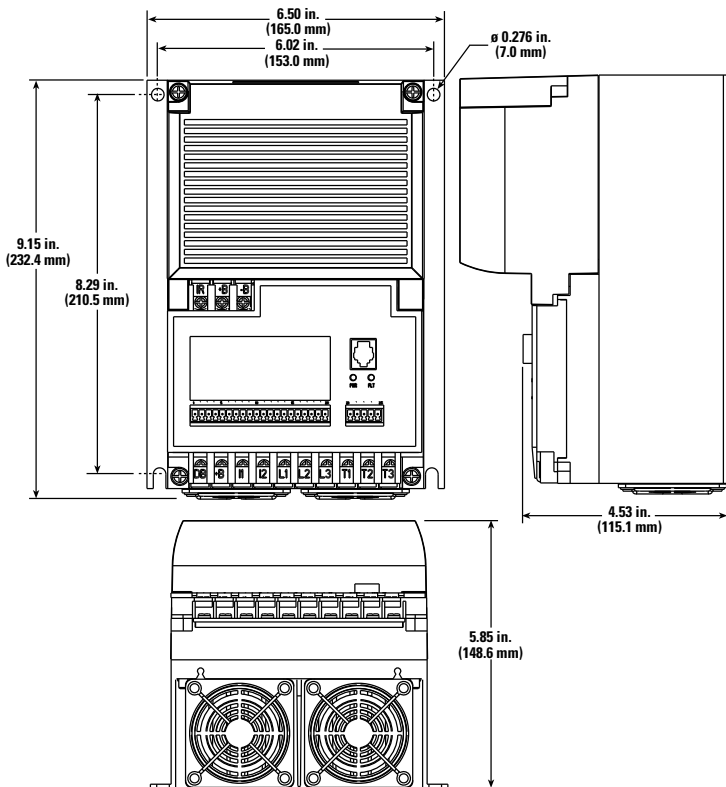
Module Dimensions



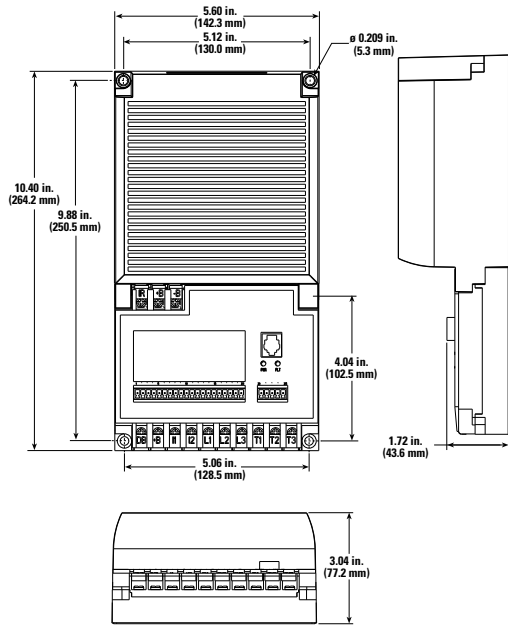
Module (7.5-10 Hp) Dimensions with CapBlok



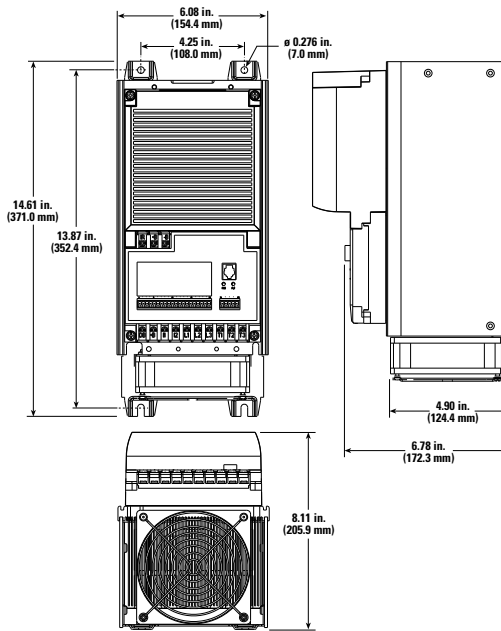
Module (7.5-10 Hp) Dimensions with CapBlok and Heatsink



Module (15-20 Hp) Dimensions with CapBlok



Module (15-20 Hp) Dimensions with CapBlok and Heatsink



AC DriveBlok Components & Accessories

120 VAC CapBlocs

CS-1-C	0.5 Hp	CapBlok Module	120 VAC	2800 µF	50/60 Hz
CS-2-C	1.0 Hp	CapBlok Module	120 VAC	4200 µF	50/60 Hz
CS-3-C	1.5 Hp	CapBlok Module	120 VAC	4200 µF	50/60 Hz

230 VAC CapBlocs

CS-1-D	1 Hp	CapBlok Module	200-240 VAC	540 µF	50/60 Hz
CS-2-D	2 Hp	CapBlok Module	200-240 VAC	1080 µF	50/60 Hz
CS-3-D	3 Hp	CapBlok Module	200-240 VAC	1080 µF	50/60 Hz
CS-5-D	5 Hp	CapBlok Module	200-240 VAC	1620 µF	50/60 Hz
CS-7-D	7 Hp	CapBlok Module	200-240 VAC	3000 µF	50/60 Hz
CS-10-D	10 Hp	CapBlok Module	200-240 VAC	3000 µF	50/60 Hz

460 VAC CapBlocs

CS-1-E	1 Hp	CapBlok Module	380-480 VAC	135 µF	50/60 Hz
CS-2-E	2 Hp	CapBlok Module	380-480 VAC	270 µF	50/60 Hz
CS-3-E	3 Hp	CapBlok Module	380-480 VAC	270 µF	50/60 Hz
CS-5-E	5 Hp	CapBlok Module	380-480 VAC	405 µF	50/60 Hz
CS-7-E	7 Hp	CapBlok Module	380-480 VAC	750 µF	50/60 Hz
CS-10-E	10 Hp	CapBlok Module	380-480 VAC	750 µF	50/60 Hz
CS-15-E	15 Hp	CapBlok Module	380-480 VAC	1350 µF	50/60 Hz
CS-20-E	20 Hp	CapBlok Module	380-480 VAC	1350 µF	50/60 Hz

*Mounting hardware is not included within the CapBlok ship kit, but may be ordered separately.

Miscellaneous accessories:

Part Number	Description
KPOOS	DriveBlok Keypad - Includes keypad with Normax back cover, RJ11 cable and QuickStart manual.
RMK	Keypad's Remote mounting Kit
KPOOS-RMK	DriveBlok Keypad & Remote Mounting Kit (not assembled)
CA11	RS485 to RS232 comm cable assembly - The CA11 converts a 9 pin DB connector, RS232 signal to a RJ-11 RS485 signal.
CK10	Module Connector Assembly - Contains the mating screw terminal connectors for the 1000 and 2000 Series Blok and CapBlok assemblies.
MK10	Mount Kit - Contains the mounting screws and "Thermastrate" thermal mounting pads for 10 1000 Series Blok and CapBlok assemblies.
MK20	Mount Kit - Contains the mounting screws and "Thermastrate" thermal mounting pads for 10 2000 Series Blok and CapBlok assemblies.
DBRXX-XXXX	Dynamic Brake Resistor - Consult Dynamic Brake Resistor Data Sheet for standard available sizes. For non-standard ratings - consult factory.

Preferred Motor Specifications

MTS Automation recommends the following motor specification to provide the best motor-drive performance. Motors near the minimum BEMF constant and maximum resistance may not meet performance specifications. Selecting a motor which fits in the Optimum (Opt) values provides the BEST performance. For more information, contact our Application Engineering Department

Preferred BEMF Parameter for Rotary Motors

Rotary Motor	For 115VAC and 230VAC Operation		For 480VAC Operation	
	Minimum	Optimum	Minimum	Optimum
2 Pole Motor	10 Vrms/krpm	32 - 60 Vrms/krpm	23 Vrms/krpm	64 - 120 Vrms/krpm
4 Pole Motor	21 Vrms/krpm	64 - 120 Vrms/krpm	42 Vrms/krpm	127 - 240 Vrms/krpm
6 Pole Motor	32 Vrms/krpm	95 - 180 Vrms/krpm	64 Vrms/krpm	191 - 360 Vrms/krpm
8 Pole Motor	42 Vrms/krpm	255 - 240 Vrms/krpm	85 Vrms/krpm	254 - 480 Vrms/krpm

Preferred BEMF Parameter for Linear Motors for IndexBlok Only

Linear Motors	For 115VAC and 230VAC Operation		For 480VAC Operation	
	Minimum	Optimum	Minimum	Optimum
Linear Motors	0.56 Vrms/Hz	1.7 - 3.2 Vrms/Hz	1.1 Vrms/Hz	3.4 - 6.4 Vrms/Hz

Recommended Motor Specifications

Model Type	Drive's I _{rated, cont.} (Arms)	Minimum Motor's I _{rated} (Arms)	R _{min} (l-l ohms)	R _{opt} (l-l ohms)	R _{max} (l-l ohms)	L _{min} (l-l mH)	L _{max} (l-l mH)
120VAC							
1001C	4.0	1.0	1.2	4.4	18.0	6.5	69.9
1002C	7.2	1.8	0.6	2.3	9.1	3.2	35.0
1003C	10.4	2.6	0.4	1.5	6.1	2.3	23.3
240VAC							
1001D	3.4	0.85	1.2	4.4	18.0	6.5	69.9
1002D	6.8	1.7	0.6	2.3	9.1	3.2	35.0
1003D	9.6	2.4	0.4	1.5	6.1	2.3	23.3
1005D	15.2	3.8	0.2	0.75	3.0	1.4	11.7
2007D	22.0	5.5	0.15	0.56	2.3	1.0	8.7
2010D	28.0	7.0	0.1	0.375	1.5	0.78	5.8
480VAC							
1001E	1.7	0.43	4.8	18.0	72.0	25.0	275.4
1002E	3.4	0.85	2.4	9.0	36.0	13.0	137.6
1003E	4.8	2.4	1.6	6.0	24.0	9.0	91.8
1005E	7.6	1.9	0.8	3.0	12.0	5.8	45.9
2007E	11.0	2.75	0.6	2.25	9.0	4.0	34.4
2010E	14.0	3.5	0.4	1.5	6.0	3.1	23.0
2015E	21.0	5.25	0.2	0.75	3.0	2.1	17.2
2020E	27.0	6.75	0.1	0.4	1.5	1.6	11.5



MTS Automation's Recommended Motor/Drive Combinations

Motor Model #	Drive Model #	Motor Model #	Drive Model #	Motor Model #	Drive Model #	Motor Model #	Drive Model #
MPM662B*	1001C	MPM1140A	1002D	MPM1420A	1003D	MPM1900A	2007D
MPM663B*	1001C	MPM1140B	1001D	MPM1420B	1002D	MPM1900B	1005D
MPM664B*	1001C	MPM1140C	1002E	MPM1420C	1003E	MPM1900C	2007E
MPM721B*	1001D	MPM1140D	1001E	MPM1420D	1002E	MPM1900D	1005E
MPM721C	1001D	MPM1141A	1002D	MPM1421A	1005D	MPM1901A	
MPM722B*	1001D	MPM1141B	1001D	MPM1421B	1003D	MPM1901B	2007D
MPM722C	1001D	MPM1141C	1002E	MPM1421C	1005E	MPM1901C	2015E
MPM723B*	1001D	MPM1141D	1001E	MPM1421D	1002E	MPM1901D	1005E
MPM723C	1001D	MPM1142A	1003D	MPM1422A	2007D	MPM1902A	
MPM724B*	1002D	MPM1142B	1002D	MPM1422B	1005D	MPM1902B	2010D
MPM724C	1001D	MPM1142C	1003E	MPM1422C	2007E	MPM1902C	2020E
MPM890A*	1001D	MPM1142D	1002E	MPM1422D	1005E	MPM1902D	2010E
MPM890B	1001D	MPM1143A	1005D	MPM1423A	2010D	MPM1903A	
MPM891A*	1001D	MPM1143B	1002D	MPM1423B	1005D	MPM1903B	
MPM891B	1001D	MPM1143C	1005E	MPM1423C	2010E	MPM1903C*	2020E
MPM892A*	1002D	MPM1143D	1002E	MPM1423D	1005E	MPM1903D	2015E
MPM892B	1001D			MPM1424A	2010D	MPM1904A	
MPM893A	1002D			MPM1424B	2007D	MPM1904B	
MPM893B	1001D			MPM1424C	2015E	MPM1904C	
				MPM1424D	2007E	MPM1904D	2020E

■ / * May not give optimum performance on low speed high torque applications.
(Contact Application Engineering for Details)

Ordering Chart

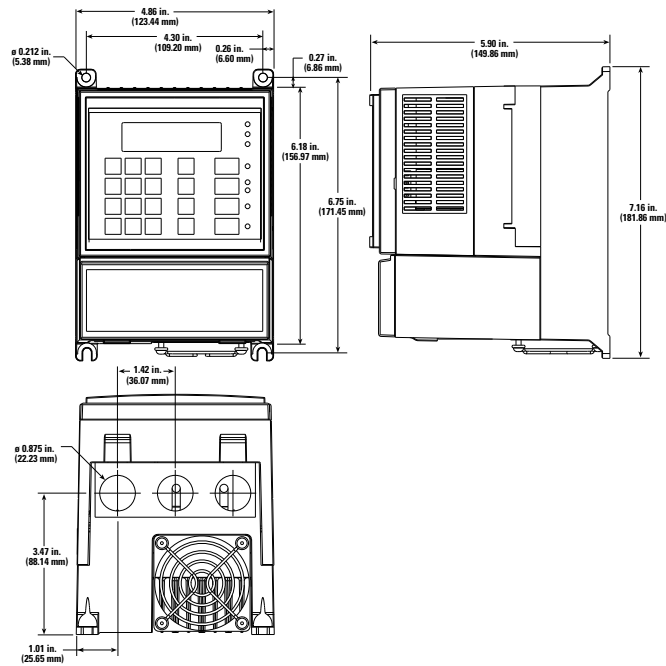
Example: ADM1005ECSWC00S

ADM	10	05	E	CS	WC	00S
CONTROL TYPE	SIZE	RATING*	VOLTAGE	CAPACITANCE	HEATSINK	CONFIGURATION
ADM = AC DriveBlok Induction Motor Module	10 - 1000 Series	01	C = 120 V	CS = Standard	WC = Wall Mount 1-5 Hp	00S = Standard
BDM = Brushless DC DriveBlok Module	20 - 2000 Series	02	D = 200/240 V	CH = High, rated for single-phase inputs on 1 and 2 Hp Drive Modules	BB = Bookshelf 1 Hp	OSS=Set-up for Standard Brake Resistor
		03	E = 380/460 V		WE = Wall Mount 7.5-10 Hp	XXX = Special
XDM = Brushless PM Motor IndexBlok Module		05			WG = Wall Mount 15-20 Hp	
		07				
SDM = AC SpindleBlok Induction Motor Module		10				
		15				
		20				

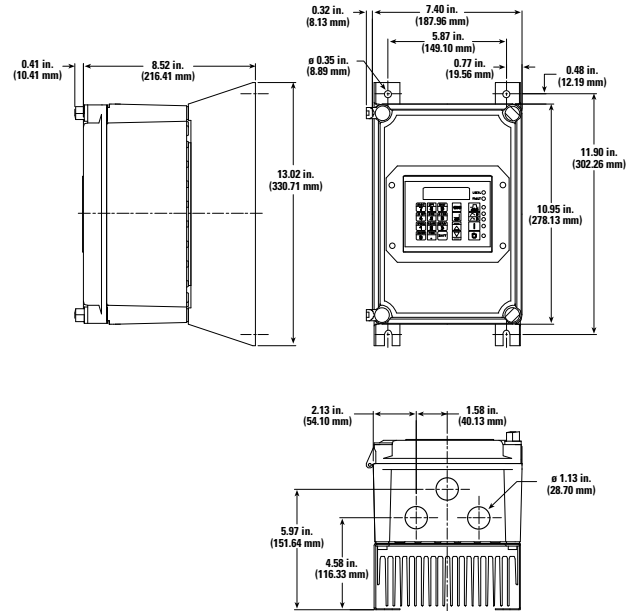
* See technical specifications



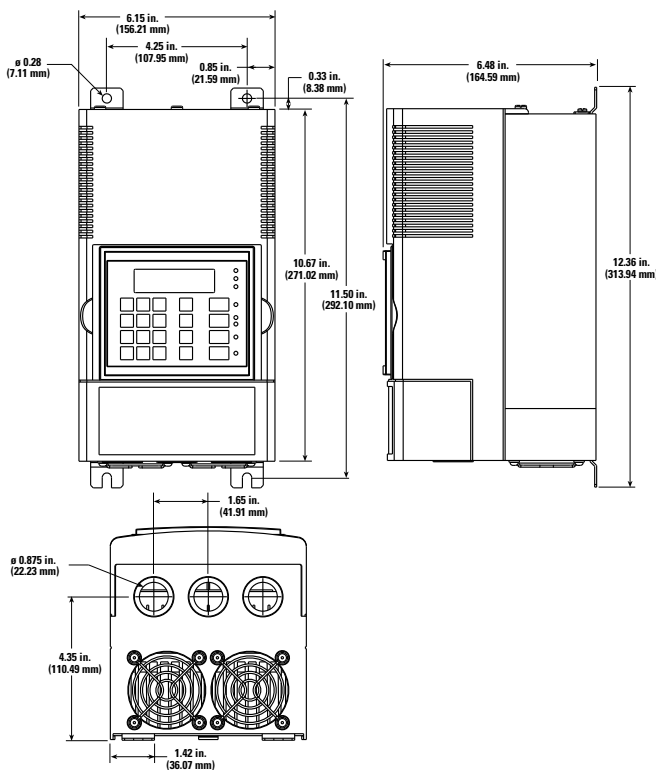
1-5 Hp - NEMA 1 (enclosed)



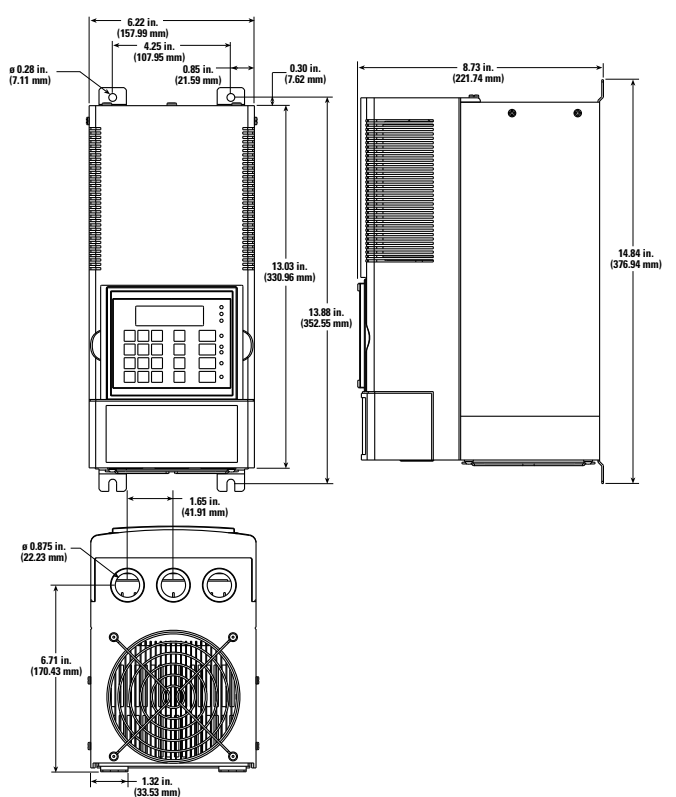
1-5 Hp - NEMA 4 (enclosed)



7.5 - 10 Hp NTAC, NEMA 1 (enclosed)



15 - 20 Hp NTAC, NEMA 1 (enclosed)



Ordering Chart

Example: NT2014A7500S

NT	20	1	4	A75	00S
MODEL	CONTROL TYPE	ENCLOSURE	VOLTAGE	POWER RATING	CONFIGURATION
NT=NTAC	20 = AC Induction Motor	1 = NEMA 1	2 = 200/240 V	A75 = 1 Hp	00S = Standard
		2 = NEMA 4	4 = 380/460 V	1A5 = 2 Hp	XXX = Special
				2A2 = 3 Hp	
				3A7 = 5 Hp	
				5A5 = 7.5 Hp	
				7A5 = 10 Hp	
				011 = 15 Hp	
				015 = 20 Hp	

Accessories:

Part Number	Description
NT20-RK-3	Remote Keypad Mounting Kit with 3 meter cable (Through-Door Mounting-Maintains NEMA 4 Rating) - Includes: 3m (10ft) cable, gasket, cut out template, mounting hardware, blank cover for drive
RS232 to RS-485	Converter with cable - RS 232 9-pin female, RS-485: RJ-12, 3 meter cable
DBRXX-XXXX	Dynamic Brake Resistor - Consult Dynamic Brake Resistor Data Sheet for standard available sizes. For non-standard ratings - consult factory.